

Frenchay Biodiversity plan

Draft

Date: November 2020

Objectives of plan

To enhance and protect the local green areas for the benefit of wildlife and general biodiversity, to provide connectivity and provide protected areas where ecosystems can recover and flourish for the wider benefit of all , including community interaction, education, well being .

Item	Notes	Actions
A. Voluntary Village Green South of Lime Tree Avenue	Implementation of the Pegasus Landscape and Ecology Maintenance Plan (LEMP) on the basis of low intervention and soft touch management with particular emphasis on <ol style="list-style-type: none"> 1. Southern boundary wildlife corridor – enhance and protect as safe habitat 2. Minimal “formative” tree pruning 3. Spring bulb planting programme for “woodland margins” 4. Wildflower meadow creation in long grass areas as defined in LEMP 5. Creation of hibernacula, log piles, nest boxes and the like 6. LTA meaningful spring bulb planting programme, including memorial influenced concepts 	Review VVG on handover from Trust, establish community work groups for planting and protection works
B. Voluntary Village Green New school area and “access to school”	<p>The new school development sits alongside the old hospital nature reserve and is in need of regeneration after years of neglect .The objectives here should have a strong bias relating to the school and developing ecological awareness , appreciation and enjoyment for the children and could include</p> <ol style="list-style-type: none"> 1. Community Orchard along the new pedestrian access to the school named “Woodward Walk” (named in memory of Bob Woodward and his contribution to CLIC) 2. Community / school garden with edible plantings 3. Regeneration (re -digging and lining and planting) the existing dilapidated wildlife pond 4. Arborists works to re shape the neglected plantation “woodland” with a view to improving habitat creation 5. Review numerous public paths through the existing wood, habitat sanctuaries / no go areas. <p>See plans below</p>	Review School plans, establish longer term objectives to work in hand with the school and the new use of the area



Existing wildlife pond .

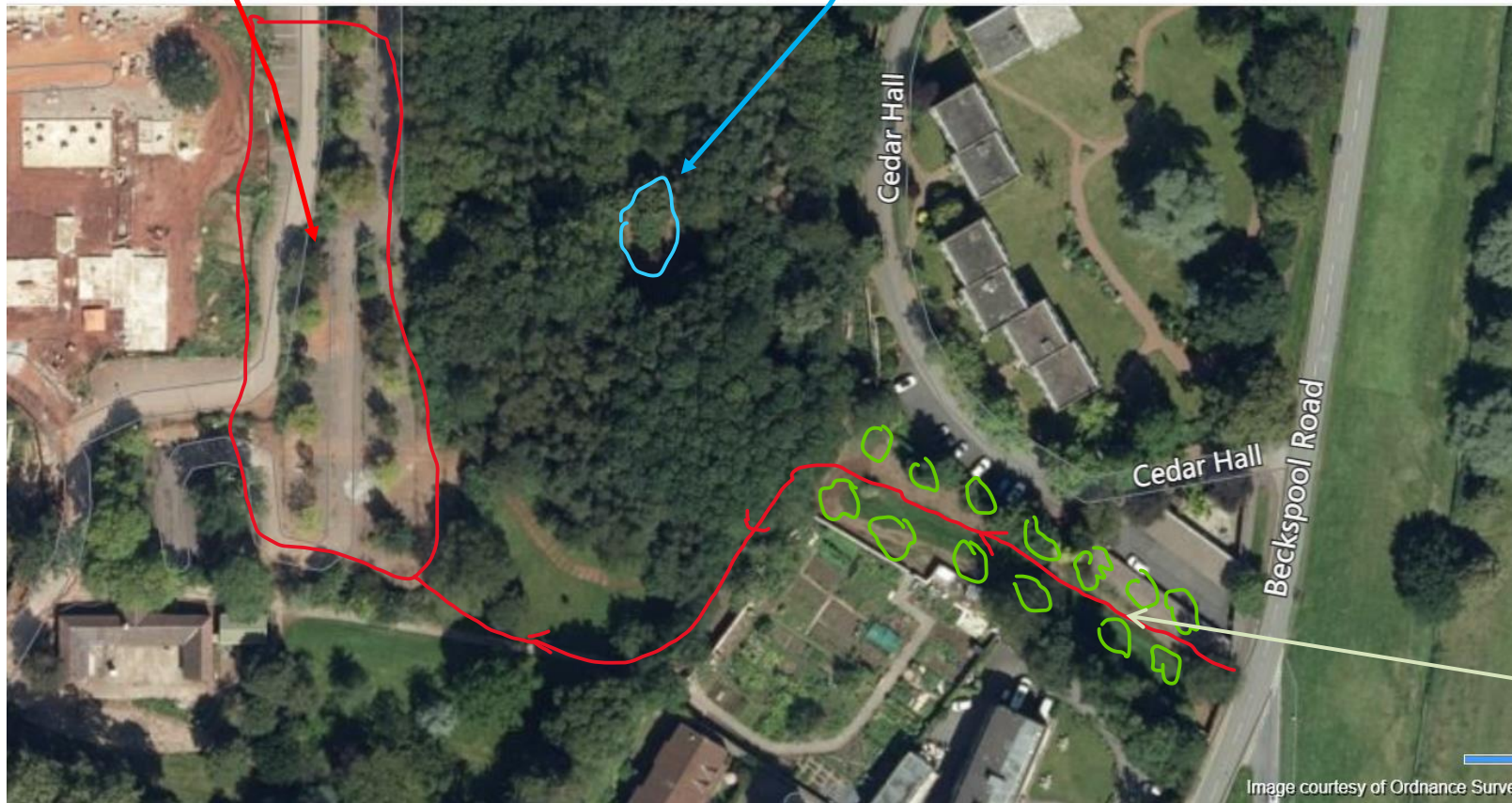
This is in a terrible state and needs a new pond liner so it can hold water again .

This was constructed some 40 yrs ago as a community initiative and the area needs to be regenerated so it can be of ecological value and an educational amenity for the new school

Frenchay Biodiversity Plan-draft 2

New
Primary
school

School wildlife
pond
regeneration



New school access
"Woodward Walk" and
community orchard

Frenchay Biodiversity Plan-draft 2

	<p>10. Drainage to Tucket pond – review land drainage to permit the natural wet zone of the valley to reform wetland species wildflower.</p> <p>11. Native tree planting from the Village Hall alongside Cleeve hill, include species for blossoms and pollination benefits</p> <p>12. Increase Parkland specimen tree planting</p> <p>13. Review grazing and “management” regimes.</p>	Parish Council to develop objectives
Spot areas for wildflower / spring bulb planting		
<p>1. Frenchay Hill Triangle with Beckspool road (opposite the Frenchay house)- Trial area</p>	<p>Subject to consent, this would be the first trail area for a wild flower planting area (we have already purchased the seed!)</p> <ul style="list-style-type: none"> • Underplant the row of exiting trees with Snowdrops, Blue bells and Snakehead Fritillary as by Click cottage) • Scarify in spring the triangular area of grass and re seed with Native wildflower mix EM7 and first year show of cornflower mix EC2 (Emorsgate references) • Amend grass cutting regimes to suit 	<p>Engage Winterbourne Parish council to develop objectives and undergo a village walk through to appraise the most suitable areas for consideration</p>

Frenchay Biodiversity Plan-draft 2



2. Beckspool pond wide verge to south – Trial area

In order to complement the wild plantings around the regenerated pond we should wish to allow an area of longer meadow grasses and wildflower to be allowed to establish in the wide verge.

Mowing contractors to be enlightened & mowing regimes amended, defined pathways and immediate roadside verges cut as usual.


Frenchay Biodiversity Plan-draft 2



3.Frenchay common – area at the top of Frenchay hill on left hand side by the telephone box

This small area is too steep to mow and much time is spent strimming the rocky outcrop, it could be plug planted and seeded to form an attractive embankment of varied flora.

Frenchay Biodiversity Plan-draft 2

	 <p>Rough ground on embankment, seed, and plant wildflower</p>	
<p>4. Area of common to the front of St Johns church and The Old House / church road</p>	<p>Its unclear if this was the area that was re turfed in the 60's , we should wish to see if any of the remnants of the original flora / wild flower still exist – leave part of it to grow for a season and review content .The area is not used in the same way as adjacent amenity spaces , it may have the potential for a significant natural meadow , subject to opinions.</p>	

Frenchay Biodiversity Plan-draft 2

		
<p>5. Various Verges along Old Gloucester road , Filton road, Beckspool road</p> <p>General – interaction with children and schools</p>	<ul style="list-style-type: none"> - These wide verges would be ideal for some wildflower areas and Tree planting in some areas - Mobilise a community wide engagement for spring bulb planting <p>Its felt to be fundamental that children are engaged and taught the value of protecting the environment and its hoped that we can do this with the help of the school , parents and various local support groups such as Avon wildlife . This may consist of activities such as</p>	

Frenchay Biodiversity Plan-draft 2

	<ul style="list-style-type: none">• Grow your own tree• Growing wildflower from seed• Bulb and tree planting• Nature watch type tasks and projects.	